

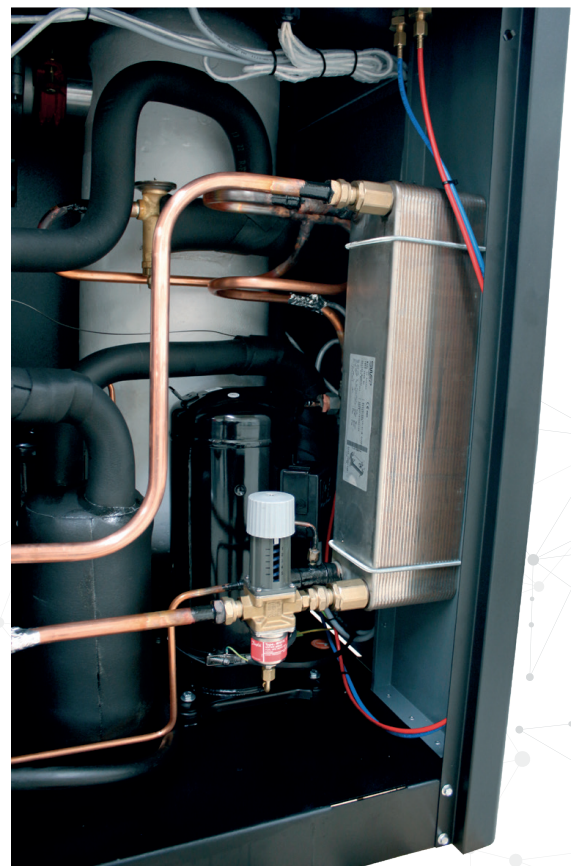
3,5-208,3  
m<sup>3</sup>/min124-7356  
cfm16  
bar

## REFRIGERATED TYPE CYCLING (THERMAL MASS) AIR DRYERS

These types of dryers consume energy dependent on air flow. The dryer's cooling system cools the water-glycol mixture down to 1°C and holds this mixture in a stainless steel container. A small pump circulates the water-glycol mixture to cool the compressed air. The cooling system's compressor turns off when the mixture reaches the required temperature resulting in considerable energy savings.

### **Advantages**

- Energy savings with capacity control
- 3°C dew point
- Very low pressure drop
- Suitable for tropical conditions
- Environmentally friendly R134a refrigerant
- Large condenser
- Operates at 60°C inlet temperature and in 50°C ambient temperature
- Stainless steel components
- High efficiency



Model	Max. Pressure		Capacity		Connection Size	Filter Set	Voltage (V/ph/Hz)	Dimensions (mm)			Weight (kg)	Controller	Refrigerant Type
	bar	psi	m³/min	cfm				Length	Width	Height			
HRC 210	16	232	3,5	124	G 1 1/2"	HGKON405 MX+MY	230 / 1 / 50	777	747	1378	101	DigiPro	R513a
HRC 305	16	232	5,08	1800	G 1 1/2"	HGKON405 MX+MY	230 / 1 / 50	777	747	1378	112	DigiPro	R513a
HRC 375	16	232	6,25	221	G 1 1/2"	HGKON405 MX+MY	230 / 1 / 50	777	747	1378	122	DigiPro	R513a
HRC 495	16	232	8,25	291	G 2"	HGKON805 MX+MY	230 / 1 / 50	855	725	1505	178	DigiPro	R513a
HRC 623	16	232	10,4	366	G 2"	HGKON1205 MX+MY	230 / 1 / 50	855	725	1505	184	DigiPro	R513a
HRC 930	16	232	15,5	547	G 2"	HGKON1205 MX+MY	230 / 1 / 50	830	730	1765	242	DigiPro	R513a
HRC 1200	16	232	20,0	706	G 2"	HGKON1205 MX+MY	400 / 3 / 50	830	730	1765	253	ESD-3	R513a
HRC 1388	16	232	23,1	817	G 3"	HGKON-1805 MX+MY	400 / 3 / 50	1150	800	1740	295	ESD-3	R513a
HRC 1800	16	232	30,0	1059	G 3"	HGKON-1805 MX+MY	400 / 3 / 50	1150	800	1740	310	ESD-3	R513a
HRC 2500	16	232	41,7	1471	G 3"	HGKON-1805 MX+MY	400 / 3 / 50	1315	880	1790	411	ESD-3	R513a
HRC 2775	16	232	46,3	1633	G 3"	HGKON-2275 MX+MY	400 / 3 / 50	1315	880	1790	443	ESD-3	R513a
HRC 3330	16	232	55,5	1960	DN100	HGKON-5850 MX+MY	400 / 3 / 50	1400	850	1840	537	ESD-3	R513a
HRC 3915	16	232	65,3	2304	DN100	HGKON-5850 MX+MY	400 / 3 / 50	1400	850	1840	557	ESD-3	R513a
HRC 5085	16	232	84,8	2993	DN100	HGKON-5850 MX+MY	400 / 3 / 50	1620	1080	1995	737	ESD-3	R513a
HRC 5850	16	232	97,5	3443	DN100	HGKON-5850 MX+MY	400 / 3 / 50	1620	1080	1995	760	ESD-3	R513a
HRC 6975	16	232	116,3	4105	DN150	-	400 / 3 / 50	2190	1065	2025	941	ESD-3	R513a
HRC 7875	16	232	131,3	4634	DN150	-	400 / 3 / 50	2190	1065	2025	963	ESD-3	R513a
HRC 9000	16	232	150	5297	DN150	-	400 / 3 / 50	2900	1200	2120	1025	ESD-3	R513a
HRC 10500	16	232	175	6179	DN200	-	400 / 3 / 50	2900	1200	2120	1162	ESD-3	R513a
HRC 12500	16	232	208,3	7356	DN200	-	400 / 3 / 50	2550	1550	2170	1480	ESD-3	R513a

Correction Formula:  $\text{Dryer Capacity} = \text{Air Delivery Capacity of the Compressors} / F1 / F2 / F3$

CORRECTION FACTORS FOR HRC SERIES									
Pressure (bar)	4	6	7	8	10	12	14	16	
F1	0,80	0,94	1	1,04	1,11	1,16	1,22	1,25	
Ambient Temperature °C	20	25	30	35	40	50	-	-	
F2	1,05	1	0,98	0,93	0,84	0,70	-	-	
Inlet Temperature °C	30	35	40	45	50	60	-	-	
F3	1,29	1	0,92	0,78	0,65	0,45	-	-	

